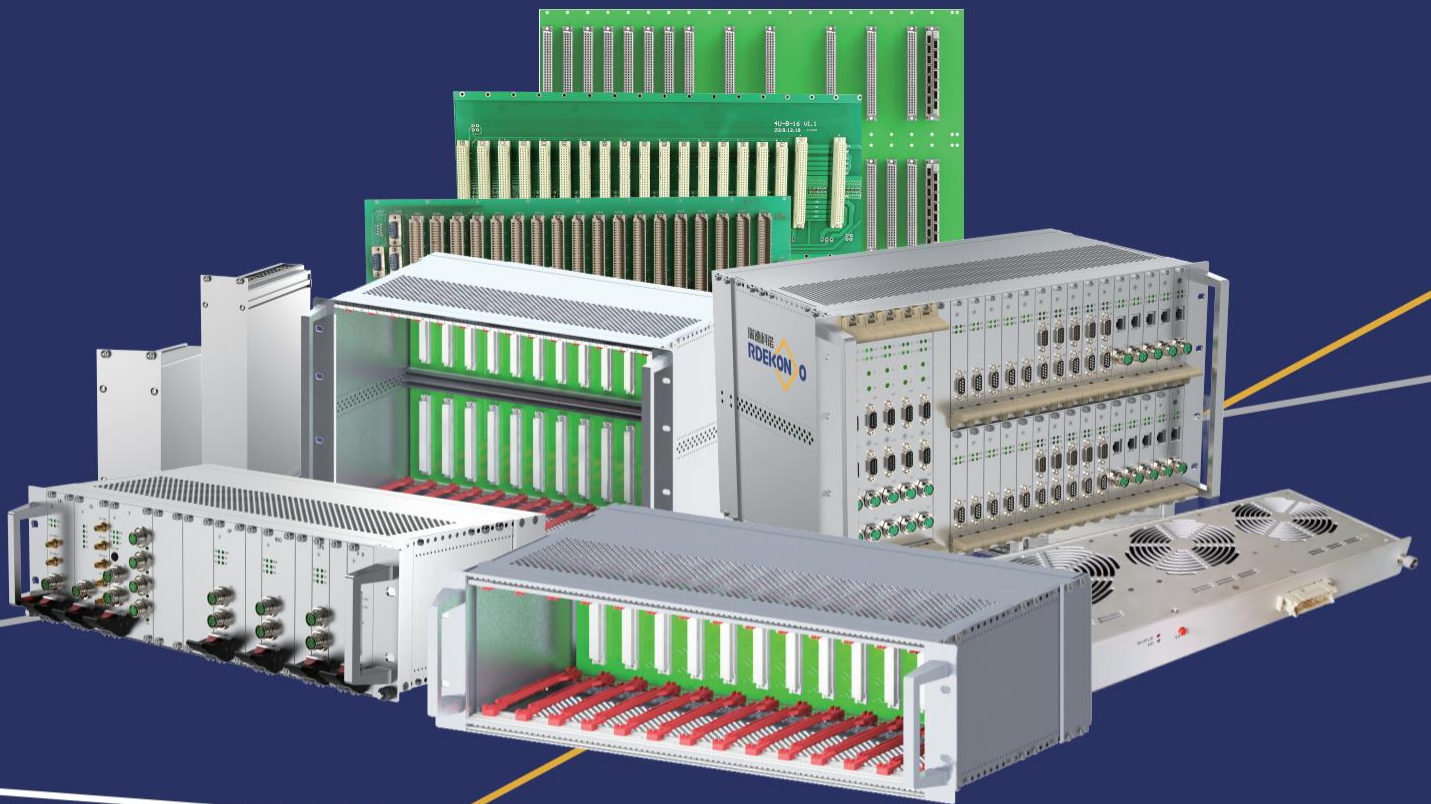


SUBRACK

Model Selection Manual for Subracks

BEIJING RDEKONO ELECTRONIC EQUIPMENT CO.,LTD

Responsibility and Innovation Connection and protection





Beijing RdeKono Electronic Equipment Beijing Rdekono Electronic Equipment co., Ltd



Beijing Rdekono Electronic Equipment Co., Ltd. is a scientific and technological enterprise engaged in products design and manufacturing, with national high-tech enterprise qualification and ISO TS22163 quality management system.

We have operation headquarters and R&D center in Beijing, a parts processing center in Cangzhou, and a complete equipment manufacturing center in Tianjin. Rdekono has a professional design team based on the complete equipment engineering technology. Rdekono has multiple technology integration design capabilities and focuses on the R&D of complete equipment system. Our technical scope includes usability design, structural design, heat dissipation design, electromagnetic shielding design, power distribution design, reliability protection design and other professional fields.

Our technical development concept is -profit users and save manufacturing cost. Through design innovative and advanced manufacturing technology, we can provide customers with complete services from product design, mechanical manufacturing to electrical and mechanical parts assembly. Rdekono is committed to helping our customers improve product competitiveness and reduce development and production costs, shorten the development cycle, and achieve market goals fast.

Mission: Integration of innovation, excellence, development and manufacturing of competitive products.

Enterprise vision: TO become a first-class electronic mechanical structure solution supplier.

Core values: Achieve cus TO mer value, improve employee welfare, return TO all shareholders.

RDEKONO



- A Series Subracks 1~6
 - Type A-I Subrack 1
 - Type A-I Subrack 1
 - Horizontal Carrying Handle 3
 - Rubber foot cover 3
 - Installation of corner rails 3
 - M4 Threaded insert 4
 - Grounding Connection Kit 4
 - Ventilation front panel 4
 - Cover plate,482.6mm (19") 5
 - Hinged cover plate,horizontally hinged 5
 - Hinged cover plate, rotatable 5
 - Hinged 6
 - Drawer for 482.6 mm (19") with base plate 6
 - Set screw M6 6

A Series Subracks



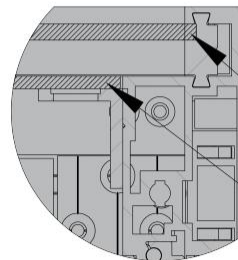
Type A-I Subrack

- The subrack is used as a desktop case
- The subrack is equipped with VC legs to prevent the chassis from sliding after stacking
- Composite standard plug-in box can be installed inside the chassis
- When supplying: the box has been partially assembled
- Standard: 60297-3
- When the non ventilated form is selected, the protection grade is IP42



Material and finish

- Cover plate: 5052 aluminum plate, chromate passivation/painting
- Side plate: 6063 aluminum profile, painted
- Beam: 6063 aluminum profile, painted
- Installation angle rail: 6063 aluminum profile, chromate passivation/painting (Color can be customized)

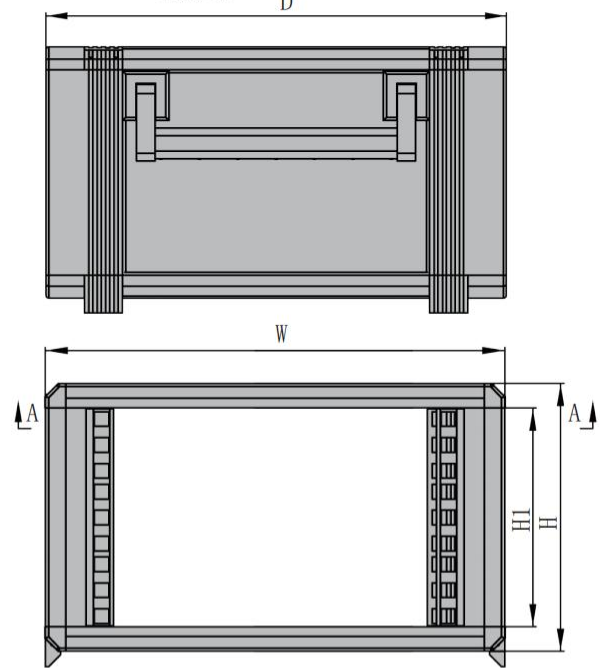


Mounting of inlaid panel

Removable panel installation

Accessories (Optional models)

Item	Name	Qty
1	Cover plate	2
2	Vertical bar	4
3	Cross member	4
4	Side member	4
5	Liner plate	2
6	Installation of corner rails	2
7	Leg	8
8	Connecting bar	4
9	Corner connector	8
10	Mounting strip	4



Order information

	Height H	Width W	Height H(mm)	Height H1(mm)	Width W(mm)	Model	Depth D	Depth D	Depth D	Model	Depth D	Depth D	Depth D
							300mm	400mm	500mm		300mm	400mm	500mm
2U	42TE	120	90	321	Perforated	01230042	01240042	01250042	Without holes	02230042	02240042	02250042	
2U	84TE	120	90	534	Perforated	01230084	01240084	01250084	Without holes	02230084	02240084	02250084	
3U	42TE	164	134	321	Perforated	01330042	01340042	01350042	Without holes	02330042	02340042	02350042	
3U	84TE	164	134	534	Perforated	01330084	01340084	01350084	Without holes	02330084	02340084	02350084	
4U	42TE	209	179	321	Perforated	01430042	01440042	01450042	Without holes	02430042	02440042	02450042	
4U	84TE	209	179	534	Perforated	01430084	01440084	01450084	Without holes	02430084	02440084	02450084	
6U	42TE	297	267	321	Perforated	01630042	01640042	01650042	Without holes	02630042	02640042	02650042	
6U	84TE	297	267	534	Perforated	01630084	01640084	01650084	Without holes	02630084	02640084	02650084	

A Series Subracks



Type A-II Subrack

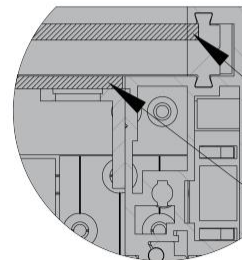
- The subrack is used as a desktop case
- The subrack is equipped with VC legs to prevent the chassis from sliding after stacking
- Composite standard plug-in box can be installed inside the chassis
- When supplying: the box has been partially assembled
- Integral 5052 aluminum plate is selected as the side plate
- Standard: 60297-3
- When the non ventilated form is selected, the protection grade is IP42

Material and finish

- Cover plate: 5052 aluminum plate, chromate passivation/painting
- Side plate: 6063 aluminum profile, painted
- Beam: 6063 aluminum profile, painted
- Installation angle rail: 6063 aluminum profile, chromate passivation/painting (Color can be customized)

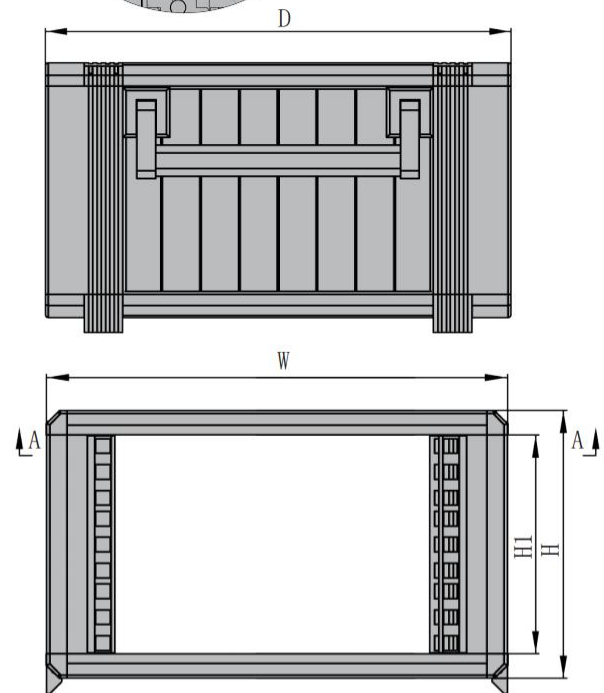
Accessories (Optional models)

Item	Name	Qty
1	Cover plate	2
2	Vertical bar	4
3	Cross member	4
4	Side member	4
5	Liner plate	2
6	Installation of corner rails	2
7	Leg	8
8	Connecting bar	4
9	Corner connector	8
10	Mounting strip	4
11	Side panel	8/12/16
12	Horizontal Carrying Handle	2



Mounting of inlaid panel

Removable panel installation



Order information

Height H	Width W	Height H(mm)	Height H1(mm)	Width W(mm)	Model	Depth D 300mm	Depth D 400mm	Depth D 500mm	Model	Depth D 300mm	Depth D 400mm	Depth D 500mm
2U	42TE	120	90	321	Perforated	03230042	03240042	03250042	Without holes	04230042	04240042	04250042
2U	84TE	120	90	534	Perforated	03230084	03240084	03250084	Without holes	04230084	04240084	04250084
3U	42TE	164	134	321	Perforated	03330042	03340042	03350042	Without holes	04330042	04340042	04350042
3U	84TE	164	134	534	Perforated	03330084	03340084	03350084	Without holes	04330084	04340084	04350084
4U	42TE	209	179	321	Perforated	03430042	03440042	03450042	Without holes	04430042	04440042	04450042
4U	84TE	209	179	534	Perforated	03430084	03440084	03450084	Without holes	04430084	04440084	04450084
6U	42TE	297	267	321	Perforated	03630042	03640042	03650042	Without holes	04630042	04640042	04650042
6U	84TE	297	267	534	Perforated	03630084	03640084	03650084	Without holes	04630084	04640084	04650084

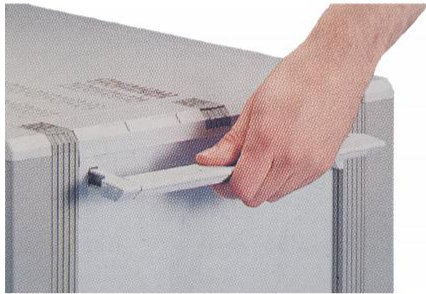
EK&EG PRO Series Subracks
 EK&EG+PRO Series Subracks
 BEK&BEG PRO Series Subracks
 Handle specification and accessories
 Guide rail specification and accessories
 19" CUR Series Subracks
 SNCF Series Subracks
 Shielded plug-in units Series Subracks
 VERO Series Subracks
 Protective Series Subracks
 CASE Series Subracks
 Type-A Series Subracks
 Rugged Subracks Side panel
 IN-S Series Subracks
 Subracks Accessories
 Panel component
 Order no. and page Table

A Series Subracks

Type A Subrack accessories

Horizontal Carrying Handle

- For easy and safe transportation
- Supplementary installation available
- Load resistance 30KG/pzzz
- Includes mounting fixings



Material and finish

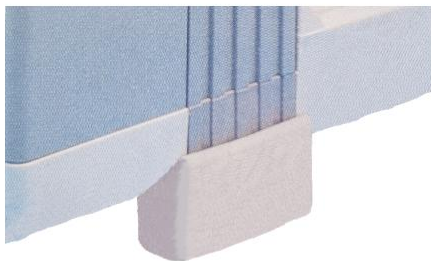
- Side section: zinc die-cast, painted, color similar to RAL7035
- Middle part: Extruded aluminum profile, painted, color similar to RAL7035

Order information

Depthmm	Qty/UP	Order no
300	2	00100100
400	2	00100101
500	2	00100102

Rubber foot cover

- Can be supplemented by mounting on Type A subrack feet to avoid sliding of the case on a smooth plane



Material and finish

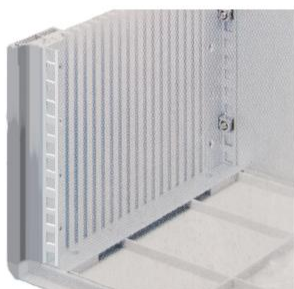
- Soft PVC, Shore hardness 60°.
- Color RAL7035

Order information

Qty/UP	Order no
12	00100103

Installation of corner rails

- Depth adjustable with 12.5 pitch for mounting rack mount devices or panels in Type A Subrack
- Mounting plates with threaded holes allow for different depths of mounting of component boxes/rack-mounted devices
- Includes mounting brackets



Material and finish

- Aluminum, anodized treatment

Order information

Height	Qty/UP	Order no
1U	4	00100104
2U	4	00100105
3U	4	00100106
4U	4	00100107
5U	4	00100108
6U	4	00100109

A Series Subracks

Type A Subrack accessories

M4 Threaded insert

- Used for mounting corner rails, sliding rails, mounting assemblies, etc. Can be pushed into the racking slot of the side panel
- Includes mounting fixings



Material and finish

- Extruded aluminum profile, chromate passivation

Order information

Height	Qty/UP	Order no
1U	8	00100110
2U	8	00100111
3U	8	00100112
4U	8	00100113
5U	8	00100114
6U	8	00100115

Grounding Connection Kit

- For meeting the requirements of electrical safety measures, suitable for all Type A subracks
- Configuration list: threaded strip, screw, connection lead in green/yellow, toothed ring, screw nut



Order information

Qty/UP	Order no
4	00100116

Ventilation front panel

- Used for ventilation of cabinets and subracks



Material and finish

- Aluminum, anodized treatment

Order information

Width	Qty/UP	Qty/UP	Order no
482.6mm(19")	1U	3	00100117
482.6mm(19")	2U	3	00100118
482.6mm(19")	3U	3	00100119

EK&EG-PRO Series Subracks
EK+EG+PRO Series Subracks
BEK&BEG PRO Series Subracks
Handle specification and accessories
Guide rail specification and accessories
19" CUR Series Subracks
SNCF Series Subracks
Shielded plug-in units Series Subracks
VERO Series Subracks
Protective Series Subracks
CASE Series Subracks
Type A Series Subracks
Rugged Subracks Side panel
IN-S Series Subracks
Subracks Accessories
Panel component
Order no. and page Table

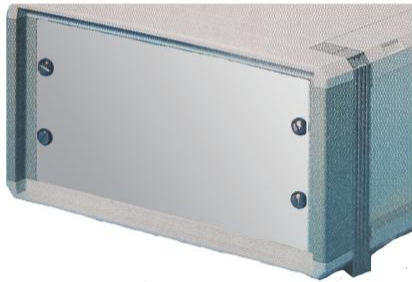
A Series Subracks



Type A Subrack accessories

Cover plate, 482.6mm (19")

- For installation in electronic cabinets or subracks



Material and finish

- Aluminum, anodized treatment

Order information

Height	Qty/UP	Order no (269.2mm)	Order no (482.6mm)
1U	3	00100120	00100126
2U	3	00100121	00100127
3U	3	00100122	00100128
4U	3	00100123	00100129
5U	3	00100124	00100130
6U	3	00100125	00100131

Hinged cover plate, horizontally hinged

- For installation in electronic cabinets or subracks
- Includes mounting fixings



Material and finish

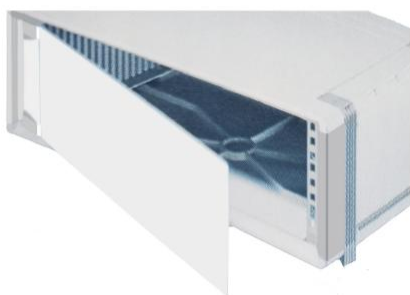
- Aluminum 3mm, anodized treatment

Order information

Height	Qty/UP	Width	Order no
3U	2	482.6mm(19")	00100132
6U	2	482.6mm(19")	00100133

Hinged cover plate, rotatable

- For installation in electronic cabinets or subracks
- Includes mounting fixings



Material and finish

- Aluminum 3mm, anodized treatment

Order information

Height	Qty/UP	Width	Order no
3U	2	482.6mm(19")	00100134
6U	2	482.6mm(19")	00100135

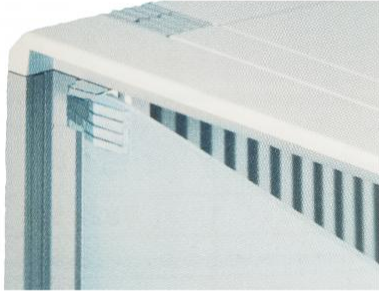
A Series Subracks



Type A Subrack accessories

Hinged

- For cover plates
- Includes mounting fixings



Material and finish

- Zinc die castings, nickel plated

Order information

Qty/UP	Order no
2	00100136

Drawer for 482.6 mm (19") with base plate

- For keyboards, operation manuals, etc. The bottom aperture plate facilitates IN-S circulation in the control cabinet and has a load capacity of 50KG. The 1U drawer can be installed by rotating 180° on the longitudinal axis so that it can be used as a bracket type countertop
- Includes sliding telescopic rails, drawer mounting kit



Material and finish

- Drawer material is aluminum, anodized
Sliding telescopic rail: steel plate, galvanized

Order information

Height	Model	Order no
1U	with base plate	00100137
1U	Without base plate	00100138
3U	with base plate	00100139
3U	Without base plate	00100140

Set screw M6

- Set screws for electronic rack mount, 482.6mm (19") mounting device and shield
- Includes plastic spacer



Order information

Name	Qty/UP	Order no
Pan head Pozidrive c/sk screwM6	100	00100141

Insert screw nut

- Fixing screws for electronic rack mounting, 482.6mm (19") mounting devices and shields can be fixed to the fixing profile 482.6mm (19") with insertion screw nuts
- For profile plate thicknesses in the range of 0.8-2.0mm. In the small error range, insertion screw nuts with a profile plate thickness of 1.2-1.5 mm should be selected for mounting devices with or without contact points with the 482.6mm (19") profile/case

Order information

Model	Panel Thick	Qty/UP	Order no
With contact	0.8-2.0mm	50个	00100142
Without contact	0.8-2.0mm	50个	00100143
With contact	1.2-1.5mm	50个	00100144
Without contact	1.2-1.5mm	50个	00100145

EK&EG PRO Series Subracks
EK+&EG+ PRO Series Subracks
BEK&BEG PRO Series Subracks
Handle specification and accessories
Guide rail specification and accessories
19"CUR Series Subracks
SNCF Series Subracks
Shielded plug-in units Series Subracks
VERO Series Subracks
Protective Series Subracks
CASE Series Subracks
Type A Series Subracks
Rugged Subracks Side panel
IN-S Series Subracks
Subracks Accessories
Panel component
Order no. and page table